

## Product ID **STG/0241**

## SEAT UNITY PENNY

### Description

Concrete Seat Unity Penny - On or Below Ground Fix. Finished in either the Smooth Prestige or Exposed range Finishes.

Contact the sales office for me specialist information about this product.

### Dimensions

If dimensions are critical please contact sales to confirm

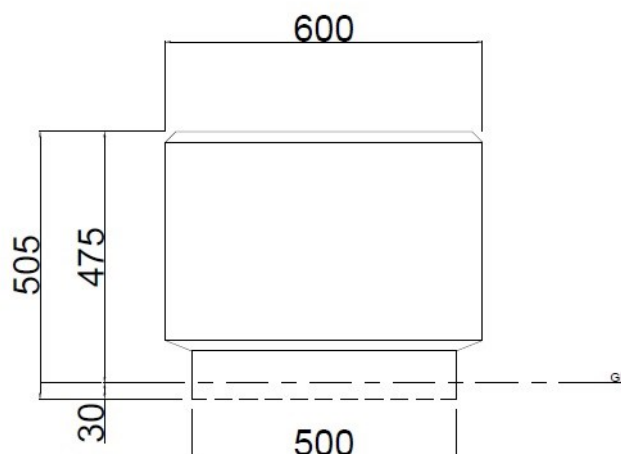
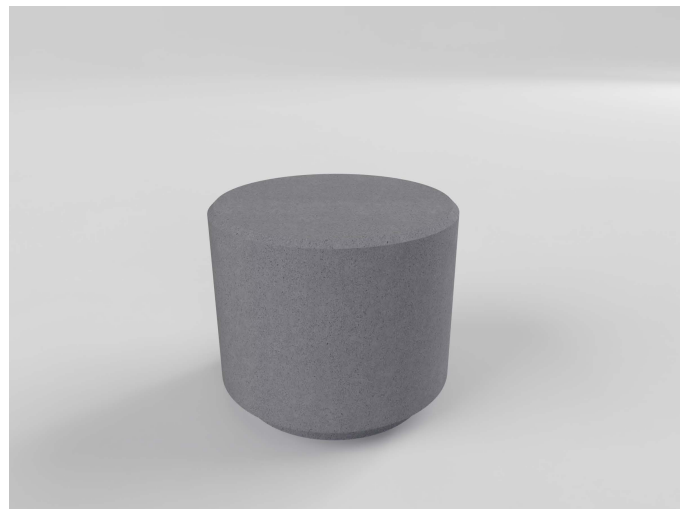
Range	Unity Cube
Materials	Artisan Precast Concrete
Dimensions W x D x H	600mm Dia x 505mm H
Below Ground	30mm
Height above Ground	505mm
Unit Weight	330 kg

Finishes	Premier Range	Finishes	Exposed Range
	Grey		Cloburn Red
	Dark Grey		Cleehill Dark Grey
	White		Silver Aberdeen
	Buff		Silver Grey Cornish
	Light Sandstone	Optional <i>Bespoke Finishes</i>	
	Dark Sandstone	Please contact the Sales Office for Sample finishes	

Optional *Bespoke Finishes*

OPTIONS	Process
Timber	Cladding
Timber	Seating
Sealant	Coating
Anti Graffiti	Coating

TIMBER FINISHES
 Sapele
 Iroko



#### Policy

Townscape's policy is one of continuous development, and we reserve the right to modify design specification or price without notice. The copyright, design rights and other intellectual property rights in the products and drawings shown and in the text displayed are the property of Townscape Products Limited.

All sizes and weights are nominal and the Company reserves the right to modify dimensions without notice. If dimensions or weights are critical please state when ordering.