

Product ID **VED / 0044**

CT BLOCK

Description

Counter Terror Block Vehicle Defence Barrier 1490mm block with 15mm chamfered edge as standard.

The Townscape Counter Terror Block is PAS 68:2010 tested to the following classifications:

30mph test – single block: V/7500/N2/48/90/6.6/0.0

40mph test – single block: V/7500/N2/64/90/12.3/2.2

And PAS 68:2005 tested to the following classification:

30mph test comprising;

3 staggered blocks: V/7500/N2/48/60/2.0/0.0

(Tested block size 1490 x 990 x 600mm)

This product is available in a range of Premier smooth and exposed aggregate finishes.

Contact the sales office for more specialist information about this product.

Specialist installation advice is available for this product

Dimensions

If dimensions are critical please contact sales to confirm.

Range	Vehicle Defence
Installation	100mm in Ground
Materials	Artisan Precast Concrete
Dimensions W x D x H	1490 x 990 x 1000mm
Height above Ground	500mm
Unit Weight	2200kg

Finishes	Premier Range	Finishes	Exposed Range
	Grey		Cloburn Red
	Dark Grey		Cleehill Dark Grey
	White		Silver Aberdeen
	Buff		Silver Grey Cornish
	Light Sandstone	Optional <i>Bespoke Finishes</i>	
	Dark Sandstone	Please contact the Sales Office for Sample finishes	

Optional *Bespoke Finishes*

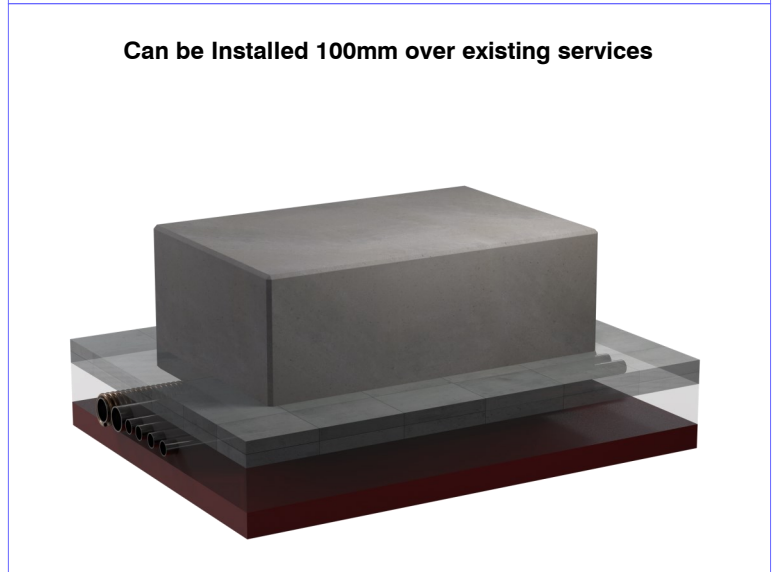
Policy

Townscape's policy is one of continuous development, and we reserve the right to modify design specification or price without notice. The copyright, design rights and other intellectual property rights in the products and drawings shown and in the text displayed are the property of Townscape Products Limited.

All sizes and weights are nominal and the Company reserves the right to modify dimensions without notice. If dimensions or weights are critical please state when ordering.



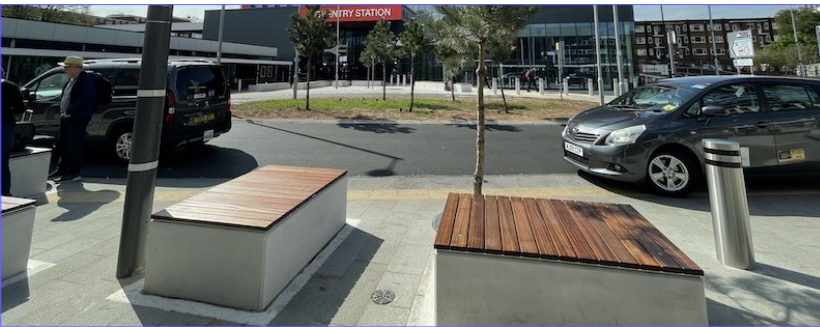
Can be Installed 100mm over existing services



OPTIONS	Process
Mild Steel	Cladding
Patterned Mild steel	Cladding
Corten	Cladding
Timber	Cladding
Integrated Timber	Seating
Sealant	Coating
Anti Graffiti	Coating

Product ID **VED / 0044**

CT BLOCK



Townscape CT Block Blocks

For more information about any aspect of this product please call the Townscape Sales Office on +44 (0) 1623 513355

Product ID **VED / 0044**

CT BLOCK

Installation

The information contained is for guidance only. Each site is different and it is the responsibility of the Installers / Site Management to ensure Safe Systems of Work, carry out risk assessments and provide the qualified resources and infrastructure necessary for all legal, structural and safety compliance. Please note, the following outlines the general method of moving and installing Townscape Products Counter Terror Blocks. It will allow the successful understanding of the install process and enable contractors / sub contractors the means to create a site specific method statement for installation of the blocks.

Method Setting Out / Base Excavation

The area for installation should be prepared using the suggested configuration / layout drawing. A rectangle should be excavated at the set out area, approximately 20mm wider than the planter plan to a depth of 150mm. Build the excavation back up to 100mm with a concrete blinding layer. In excavations with poor or uneven substrate conditions or soft ground, the excavation base needs to be filled with compacted MOT Type 1 to a depth that allows no migration of the laying course. In soft earth installations a purpose made concrete socket should be installed. This Foundation needs to be carefully designed by an appropriately competent professional. Please contact our Sales office for more information. Levels to within 2 meters of the excavation to be within +/- 50mm. For install into Concrete Block paving, placement of blocks on the sand laying course is acceptable. In all instances the Planters should be recessed at least 100mm and be 900mm from the top of the planter to finished surface level.

Lifting and positioning Planters

Attach suitably rated lifting eyes / Loops. Suitable Canvas Lifting Straps are then threaded on to the lifting loops and attached to the Forklift Truck / Tele-Handler Lifting Jib (Lifting Loops and Canvas Lifting Straps must have a Safe Working Load (SWL) sufficient to lift the Planter). With the assistance from a Banksman, the mass is slowly raised and the block manoeuvred to its finished location. The positioned block is then carefully lowered into the recessed excavation. once the block is in its final resting position, the straps and lifting loops can be removed.

Maintenance and Product Care

Maintaining Precast Concrete

Cleaning of concrete is to retain the original finish and to remove unsightly deposits from the surface of the material. Light staining from food or liquid products should only be removed by an application of hot water with added detergent by a light brushing action. Heavier staining can be removed using proprietary cleaning products that are specifically manufactured for this purpose. Before any application the suitability and instruction for use should be obtained from the manufacturer, who will be able to offer specific advice and will normally carry out spot tests to ensure the precast concrete's integrity after application. Jet washing, steam cleaning and blasting systems are available and may prove adequate if used by a competent operative. Intensive and localised use could erode the top surface. Acid cleaning of precast concrete on site is hazardous and should not be attempted. Collection of debris from the surface area by all standard cleaning methods is acceptable. It is recommended that no severe cleaning action is carried out excessively; this includes harsh sucking action that may remove jointing materials, and the use of stiff bristled brushes that have repetitive action such as a circular scrubbing action that will both erode and mark the top surface. Care should be exercised in the use of heavy duty mechanical sweeping machines; these may cause damage through excessive scrubbing action and through scrubbing action of tyres. Contact Pieri U K Limited. Tel 01925 816035

Concrete Discolouration

Townscape precast concrete products are manufactured using aggregates to create colour. In some instances additional dye may be added to a product to achieve a particular type of colour depth. Slight variations are to be expected from all naturally sourced materials and whilst we work very hard to alleviate colour variations it is an inevitable part of the ageing process. In the same way slight variation in quarry seams may occur over a period of time.

Concrete Efflorescence

All concrete products may suffer the temporary phenomenon of efflorescence. This is in no way detrimental to the performance of the product. Its occurrence cannot be predicted, its occurrence is more probable in paving blocks than larger precast blocks.

Natural Aggregates

All Townscape Precast concrete CT Planters are manufactured using natural aggregates sourced from sustainable sources.

Rock Salt

Rock salt is a product frequently used for the elimination or prevention of ice and frost on paving. Rock salt is abrasive and continual use on precast products can cause deterioration of the surface. Alternative products in the form of granules or liquid can be used as an alternative. Granule forms known as Thaw Granules are available. Contact Dimex Limited. Tel. 0121 704 3551 Fax. 0121 704 4024.

Method for Maintaining Freeze thaw affected precast concrete products.

Clean away any effloresced loose concrete surface substrate with a stiff brush to ensure any flaking material is removed. Patch repair the affected area if required. Townscape can provide a patch repair mix kit if needed. Use a proprietary concrete sealing system should as 'Smith's Polyurethane Paving Brick Sealer' or 'Smith's Permanent Concrete Sealer' These type of sealing systems seals the surface of the concrete and are considered useful tools to help mitigate Freeze thaw damage related issues. Apply as directed by the sealer manufacturer. Reapply the sealer in line with sealer manufacturers recommendations as part of your normal maintenance regimes.

Oil and Grease

Removal of oil from precast concrete. In addition to hot water, an alkaline degreaser will greatly increase removal rates of oil and grease. Hot water lifts the oil from the concrete, and the degreaser emulsifies the oil, allowing it to be flushed from the surface. Some contractors use at least a little degreaser for most jobs, even to remove dirt, which can be somewhat oily.

Rust

Rust will stain precast concrete. Heavy rust stains can penetrate deeply into concrete, so they can be tough to remove completely. Cleaners containing oxalic acid are most effective.

Mortar Stains

Mortar staining can generally be removed with a stiff brush and or a jetwash. For more stubborn stains and mild acid treatment can be considered. Adoclean is a suitable acid-based system manufactured by Adomast Manufacturing Ltd, Barkston Road, Carlton Industrial Estate, Barnsley S71 3HU www.adomast.co.uk. 44 (0) 1226 707 863. As with all proprietary cleaners Townscape cannot guarantee success. For more difficult stain specialist advice should be sort.

Graffiti

Precast concrete with graffiti coating. Some of Townscape precast concrete products are treated with an anti-Graffiti coating manufactured by Adomast Manufacturing Ltd, Barkston Road, Carlton Industrial Estate, Barnsley S71 3HU www.adomast.co.uk. 44 (0) 1226 707 863.

General graffiti

Graffiti can be very difficult to remove, depending on the type of paint used. Several proprietary chemical strippers are available, many of which contain a citrus-based solvent, methylene chloride, or potassium hydroxide. Citrus-based solvents are the least aggressive and may not work on certain Paints, but they are the safest to use and often have less-stringent disposal requirements. For best results, allow products containing potassium hydroxide to soak into the concrete surface for several hours before power washing. These products also require a subsequent application of an acid Neutralizer. Graffiti also can be removed by a special attachment that includes a tungsten-carbide nozzle that meters sand into the water stream before it exits the nozzle. But the sand will etch the concrete, which may not be desirable. In recent years, softer sodium bicarbonate abrasives have been used with power washers to remove graffiti from concrete (see Concrete Construction, February 1999, p. 87).

For more information about any aspect of this product please call the Townscape Sales Office on +44 (0) 1623 513355

Townscape Products Ltd, Fulwood Road South, Sutton-in-Ashfield, Nottinghamshire NG17 2JZ

Telephone +44 (0) 1623 513355 Email sales@townscape-products.co.uk

© 2023 Townscape Products Ltd E&O.E.