

Product ID **PLT/O 182**

BISHOPGATE PLANTER

Description

Bishopsgate 1800 Concrete Planter Bench on Ground fixed or recessed fit. Artisan Precast Concrete finish with 15mm cham-fers. Planting Capacity 450 Liters. The planter section has through drainage to mitigate over filling. A propriety water res-ervoir system is recommended for this product.

Contact the sales office for more specialist information about this product.

Dimensions

If dimensions are critical please contact sales to confirm.

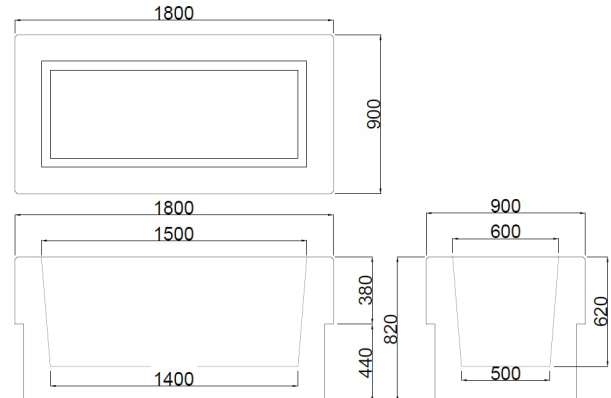
Installation

Surface should be flat . Lift planter into position. Place into the base of the Planter-Terram 1000 or equivalent filter membrane. Add 50mm of pea shingle to the bot-tom of the liner. Add additional water reservoir if needed. Plant using the specified medium and plant from the horticultural specialist.

Ensure proper drainage underneath any surface mounted planters, e.g holes through the surface material deep enough to reach a permeable material layer to allow water to percolate away.



| | |
|-----------------------------|-----------------------------|
| Range | Concrete Planter |
| Installation | Surface Mounted or Recessed |
| Materials | Artisan Precast Concrete |
| Dimensions W x D x H | 1800 x 900 x 820mm (H) |
| Height above Ground | 420 - 820mm |
| Unit Weight | 2500kg |



| Finishes | Premier Range | Finishes | Exposed Range |
|--|-----------------|---|---------------------|
|  | Grey |  | Cloburn Red |
|  | Dark Grey |  | Cleehill Dark Grey |
|  | White |  | Silver Aberdeen |
|  | Buff |  | Silver Grey Cornish |
|  | Light Sandstone | Optional <i>Bespoke Finishes</i> | |
|  | Dark Sandstone | | |

Optional *Bespoke Finishes*

Please contact the Sales Office for Sample finishes



| OPTIONS | Process |
|----------------------|----------|
| Mild Steel | Cladding |
| Patterned Mild steel | Cladding |
| Corten | Cladding |
| Timber | Cladding |
| Timber | Seating |
| Sealant | Coating |
| Anti Graffiti | Coating |

Policy

Townscape's policy is one of continuous development, and we reserve the right to modify design specification or price without notice. The copyright, design rights and other intellectual property rights in the products and drawings shown and in the text displayed are the property of Townscape Products Limited.

All sizes and weights are nominal and the Company reserves the right to modify dimensions without notice. If dimensions or weights are critical please state when ordering.

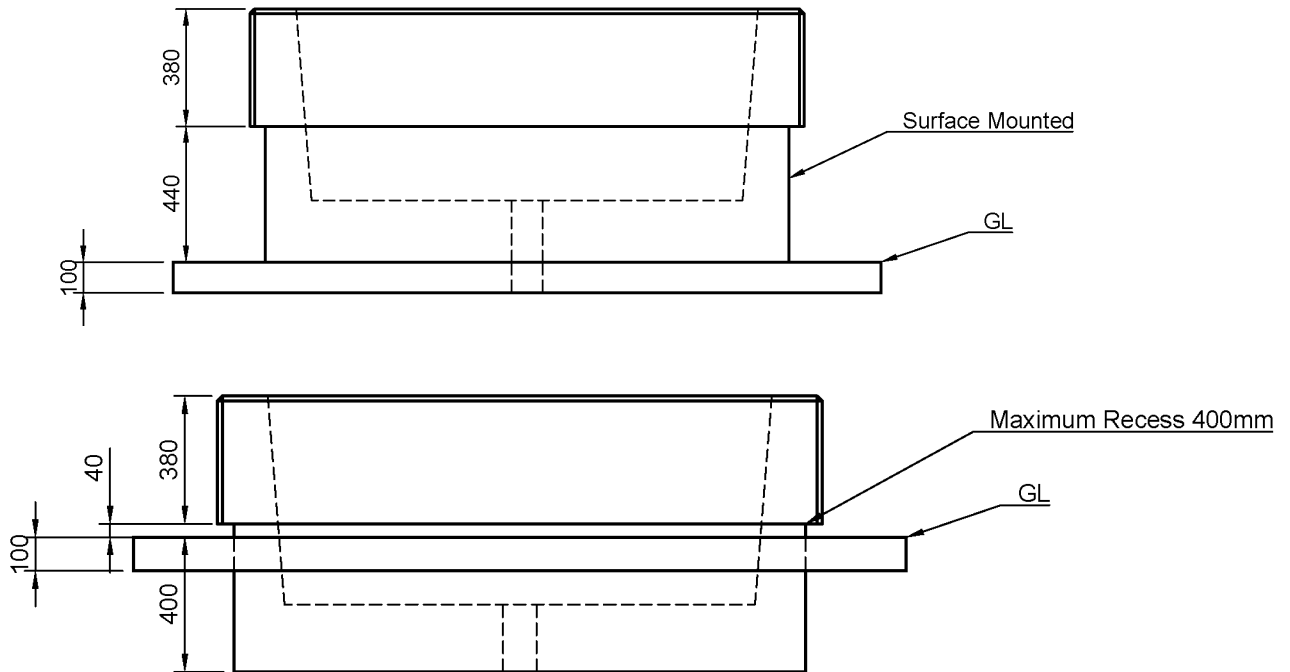
Townscape Products Ltd, Fulwood Road South, Sutton-in-Ashfield. Nottinghamshire NG17 2JZ

Telephone +44 (0) 1623 513355 Email sales@townscape-products.co.uk

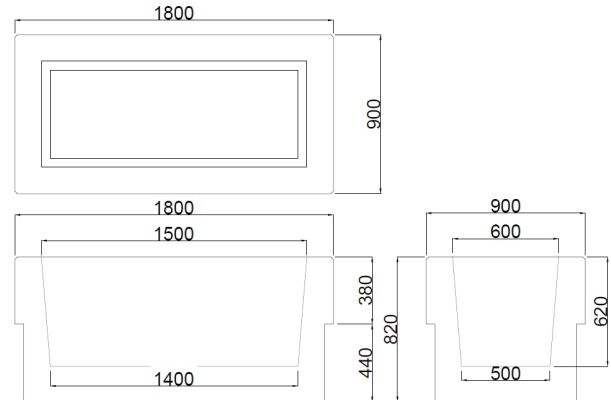
© 2023 Townscape Products Ltd E&O.E.

Product ID **PLT/O 182**

BISHOPGATE PLANTER



| | |
|-----------------------------|-----------------------------|
| Range | Concrete Planter |
| Installation | Surface Mounted or Recessed |
| Materials | Artisan Precast Concrete |
| Dimensions W x D x H | 1800 x 900 x 820mm (H) |
| Height above Ground | 420 - 820mm |
| Unit Weight | 2500kg |



| Finishes | Premier Range | Finishes | Exposed Range |
|--|-----------------|---|---------------------|
|  | Grey |  | Cloburn Red |
|  | Dark Grey |  | Cleehill Dark Grey |
|  | White |  | Silver Aberdeen |
|  | Buff |  | Silver Grey Cornish |
|  | Light Sandstone | Optional <i>Bespoke Finishes</i> | |
|  | Dark Sandstone | | |

Optional *Bespoke Finishes*

Please contact the Sales Office
for Sample finishes



| OPTIONS | Process |
|----------------------|----------|
| Mild Steel | Cladding |
| Patterned Mild steel | Cladding |
| Corten | Cladding |
| Timber | Cladding |
| Timber | Seating |
| Sealant | Coating |
| Anti Graffiti | Coating |

Policy

Townscape's policy is one of continuous development, and we reserve the right to modify design specification or price without notice. The copyright, design rights and other intellectual property rights in the products and drawings shown and in the text displayed are the property of Townscape Products Limited.

All sizes and weights are nominal and the Company reserves the right to modify dimensions without notice. If dimensions or weights are critical please state when ordering.

Townscape Products Ltd, Fulwood Road South, Sutton-in-Ashfield. Nottinghamshire NG17 2JZ

Telephone +44 (0) 1623 513355 Email sales@townscape-products.co.uk

© 2023 Townscape Products Ltd E&O.E.