

Product ID **PLT/O 182**

BISHOPGATE PLANTER

Description

Bishopsgate 1800 Concrete Planter with a recessed fit. Top section Artisan Precast Concrete finish with 15mm chamfers. Bottom section is fairfaced with square edges. Note this product is designed to be recessed fitted to 340mm below finishes to allow for a deeper planting area. Planting Capacity 450 Litres. The planter section has through drainage to mitigate over filling. A propriety water reservoir system is recommended for this product.

Contact the sales office for more specialist information about this product.

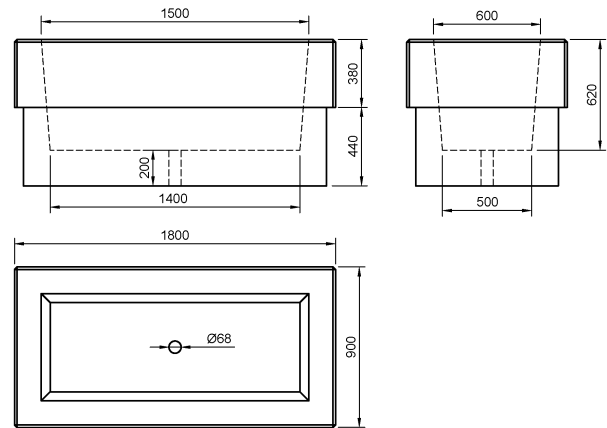
Dimensions

If dimensions are critical please contact sales to confirm.

Installation

Surface should be flat . Lift planter into position. Place into the base of the Planter-Terram 1000 or equivalent filter membrane. Add 50mm of pea shingle to the bot-tom of the liner. Add additional water reservoir if needed. Plant using the specified medium and plant from the horticultural specialist.

Ensure proper drainage e.g holes through the material underneath the planter deep enough to reach a permeable material layer to allow water to percolate away.



Range	Concrete Planter
Installation	Recessed 340mm
Materials	Artisan Precast Concrete
Dimensions W x D x H	1800 x 900 x 820mm (H)
Height above Ground	480mm
Unit Weight	2500kg

Finishes	Premier Range	Finishes	Exposed Range
	Grey		Cloburn Red
	Dark Grey		Cleehill Dark Grey
	White		Silver Aberdeen
	Buff		Silver Grey Cornish
	Light Sandstone	Optional <i>Bespoke Finishes</i>	
	Dark Sandstone		

Optional *Bespoke Finishes*

Please contact the Sales Office for Sample finishes



OPTIONS	Process
Mild Steel	Cladding
Patterned Mild steel	Cladding
Corten	Cladding
Timber	Cladding
Timber	Seating
Sealant	Coating
Anti Graffiti	Coating

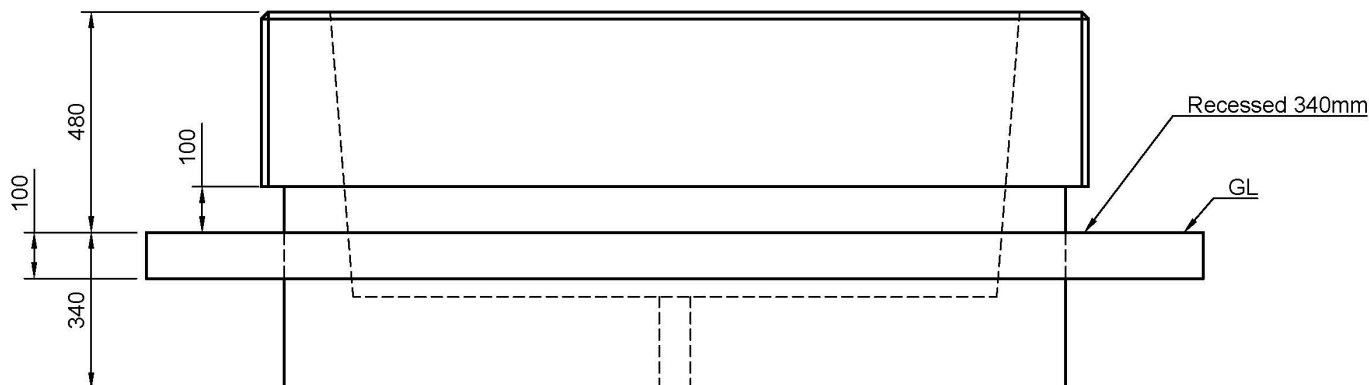
Policy

Townscape's policy is one of continuous development, and we reserve the right to modify design specification or price without notice. The copyright, design rights and other intellectual property rights in the products and drawings shown and in the text displayed are the property of Townscape Products Limited.

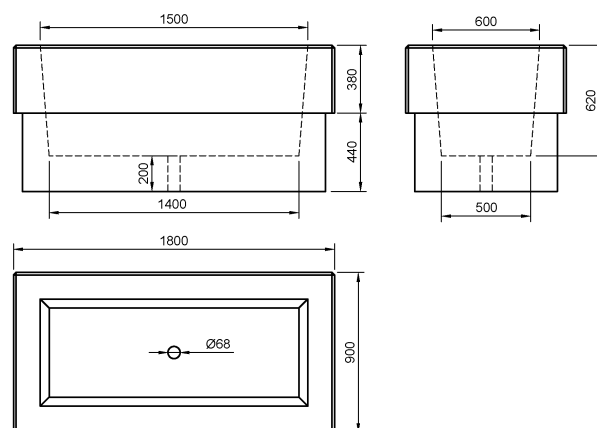
All sizes and weights are nominal and the Company reserves the right to modify dimensions without notice. If dimensions or weights are critical please state when ordering.

Product ID **PLT/O 182**

BISHOPGATE PLANTER



Range	Concrete Planter
Installation	Recessed 340mm
Materials	Artisan Precast Concrete
Dimensions W x D x H	1800 x 900 x 820mm (H)
Height above Ground	480mm
Unit Weight	2500kg



Finishes	Premier Range	Finishes	Exposed Range
	Grey		Cloburn Red
	Dark Grey		Cleehill Dark Grey
	White		Silver Aberdeen
	Buff		Silver Grey Cornish
	Light Sandstone	Optional <i>Bespoke Finishes</i>	
	Dark Sandstone		

Optional *Bespoke Finishes*

Please contact the Sales Office
for Sample finishes

OPTIONS	Process
Mild Steel	Cladding
Patterned Mild steel	Cladding
Corten	Cladding
Timber	Cladding
Timber	Seating
Sealant	Coating
Anti Graffiti	Coating



Policy

Townscape's policy is one of continuous development, and we reserve the right to modify design specification or price without notice. The copyright, design rights and other intellectual property rights in the products and drawings shown and in the text displayed are the property of Townscape Products Limited.

All sizes and weights are nominal and the Company reserves the right to modify dimensions without notice. If dimensions or weights are critical please state when ordering.

Townscape Products Ltd, Fulwood Road South, Sutton-in-Ashfield. Nottinghamshire NG17 2JZ

Telephone +44 (0) 1623 513355 Email sales@townscape-products.co.uk

© 2023 Townscape Products Ltd E&O.E.