

## Product ID VED Seating Options

Townscape CT Blocks can be supplied with a choice of seat tops. Standard Townscape Seat Tops are made of a choice of hardwood timbers. Sapele, Oak or Iroko. Almost every Seating option is compatible with any block

Contact the sales office for more information/clarification about seating options.

Range	CT Block Seating Options
Installation	On Townscape CT Blocks
Materials	Tropical Hardwood Timber

SKU	Dimensions W x D x H	Unit Weight	Description
<b>CONCRETE BLOCKS</b>	-	-	-
VED/0044	1490x990x600mm	2200 Kg	HVM Block
VED/0045	1990x990x600mm	2933 Kg	HVM Block
VED/0046	1990x990x600mm	2933 Kg	HVM Stadium Block
VED/0047	1990x990x600mm	2933 Kg	HVM Offset Block
VED/0044125	1250x1250x600mm	2330 Kg	HVM Block
VED/0044225	2250x990x600mm	3300 Kg	HVM Block
VED/0044250	2500x990x600mm	3820 Kg	HVM Block
VED/0044300	3000x990x600mm	4500 Kg	HVM Block
VED/0044320	3200x990x600mm	4700 Kg	HVM Block
<b>SEATING OPTIONS</b>	-	-	-
VED/___D	-	-	Standard Deck Seating
VED/___HD	-	-	Half Depth Deck Seating
VED/___DLS	-	-	Standard Deck Seating on top and long sides
VED/___DSH	-	-	Standard Deck Seating on top and short sides
VED/___B	-	-	Standard Bishop Seating
VED/___BLS	-	-	Standard Bishop Seating on top and long sides
VED/___BSS	-	-	Standard Bishop Seating on top and short sides
VED/___HB	-	-	Half Depth Bishop Seating
VED/___FB	-	-	Full Double Backrest
VED/___HB1	-	-	Style 1 Half Backrest with Armrests
VED/___HB2	-	-	Style 2 Half Backrest with Armrests
VED/___BAN1	-	-	Banyan Seating Style 1
VED/___BAN2	-	-	Banyan Seating Style 2
VED/___/P*	-	-	Partial seating
VED/___/R*	-	-	Recessed Seating
VED/___FTC	-	-	Full Cladding
VED/___AR	-	-	Armrests

\* Add the length of the timber seating at the end in mm e.g. VED/0044D/P1000 for 1000mm of seating

**Bespoke Sizes can also be specified**



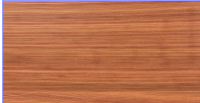


### Policy

Townscape's policy is one of continuous development, and we reserve the right to modify design specification or price without notice. The copyright, design rights and other intellectual property rights in the products and drawings shown and in the text displayed are the property of Townscape Products Limited.

All sizes and weights are nominal and the Company reserves the right to modify dimensions without notice. If dimensions or weights are critical please state when ordering.

## Product ID VED Seating Options

Examples of seating options can be seen throughout the rest of the specification sheet on a variety of block sizes. Some images show trick stoppers which do **NOT** come as standard contact the sales team for more information. **Timber is Sapele as standard** add IK or O for Oak to the end of the code for Iroko e.g. VED\_\_\_\_DIK.

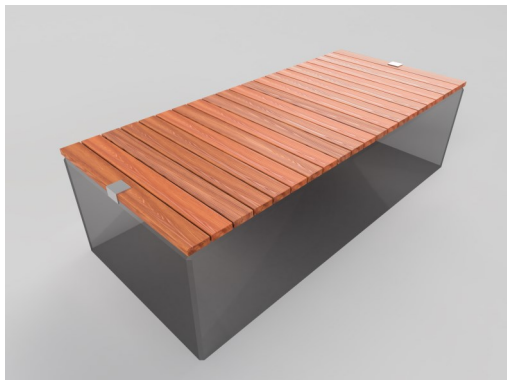
Sapele	Iroko	Oak
		

If you would like samples of the different timber options please contact the sales team

*Note that oily hardwood timbers are susceptible to tannin bleed under the right atmospheric conditions. Contact the sales office for more information.*

### VED/0044250 D

2490x990x40  
Standard Deck  
Seat Top,  
Sapele Timber.



### VED/0044B

1490x990x40  
Standard  
Bishop Seat  
Top,  
Sapele Timber.



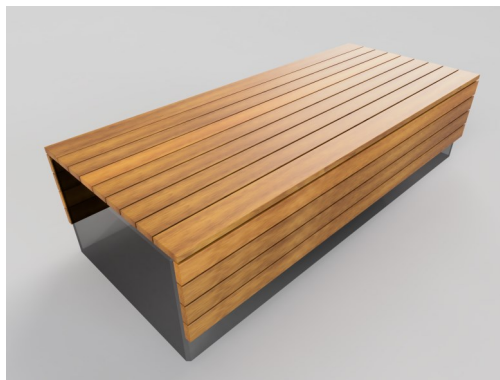
### VED/0044DSS

1570x990x640  
Standard Deck  
Top and Short  
Sides Seat  
Top,  
Sapele Timber.



### VED/0044250B LSIK

2490x1070x460  
Standard  
Bishop Top  
and Long  
Sides Seat  
Top,  
Iroko Timber.



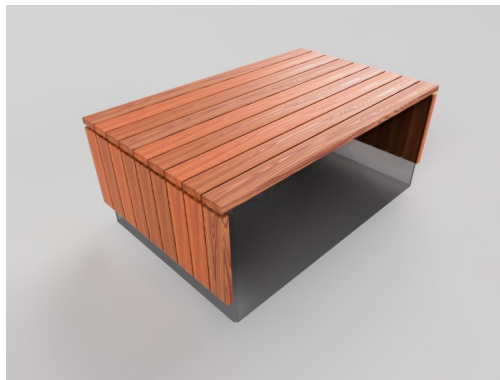
### VED/0044DLS

1490x1070x460  
Standard Deck  
Top and Long  
Sides Seat  
Top,  
Oak Timber.



### VED/0044BSS

1570x990x460  
Standard  
Bishop Top  
and Short  
Sides Seat  
Top,  
Sapele Timber.



#### Policy

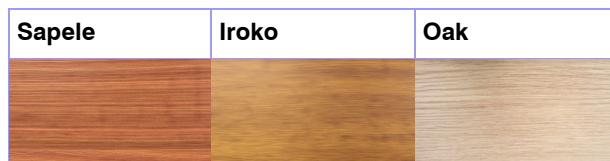
Townscape's policy is one of continuous development, and we reserve the right to modify design specification or price without notice. The copyright, design rights and other intellectual property rights in the products and drawings shown and in the text displayed are the property of Townscape Products Limited.

All sizes and weights are nominal and the Company reserves the right to modify dimensions without notice. If dimensions or weights are critical please state when ordering.

## Product ID VED Seating Options

\*If the recess is the entire length of the block there is no need to put a number on the end.

\*\*include the amount of armrests at the end of the code.  
(Doesn't apply for VED/0044HB1 and VED/0044HB2)

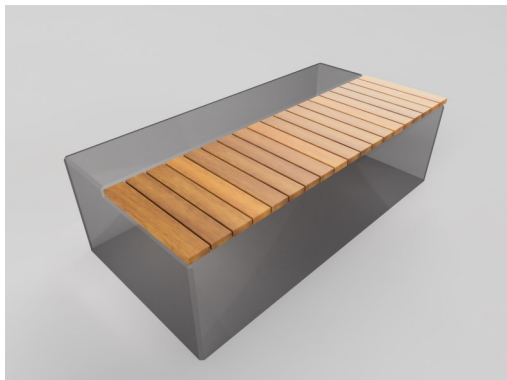


**If you would like samples of the different timber options please contact the sales team**

***Note that oily hardwood timbers are susceptible to tannin bleed under the right atmospheric conditions. Contact the sales office for more information.***

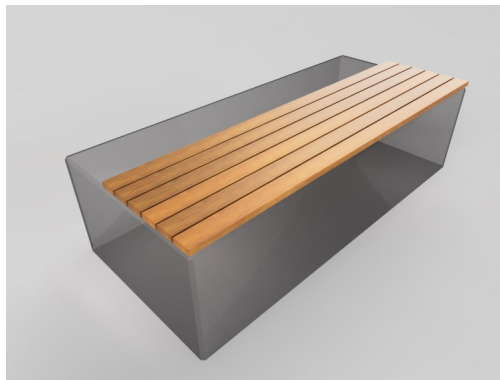
### VED/0045HDI K/R\*

1990x600x40  
Standard Deck  
Seat Top,  
Iroko Timber,  
Recessed.



### VED/0045HB

1990x600x40  
Standard Half  
Bishop Seat  
Top,  
Iroko Timber,  
Recessed.



### VED/0044FTC

1570x1070x460  
Standard Full  
Cladding Seat  
Top,  
Sapele Timber.



### VED/0046FBAR 4\*\*

1990x990x440  
Full Double  
Backrest Seat  
Top,  
Sapele Timber,  
Recessed into  
Block,  
4 Armrests.



### VED/0044HB1

1490x480x440  
Style 1 Half  
Depth  
Backrest,  
Sapele Timber,  
Armrests as  
Standard,  
Powder Coated  
Steel Frame.



### VED/0044HB2

1490x480x380  
Style 2 Half  
Depth  
Backrest,  
Sapele Timber,  
Armrests as  
Standard,  
Powder Coated  
Steel Frame.



#### Policy

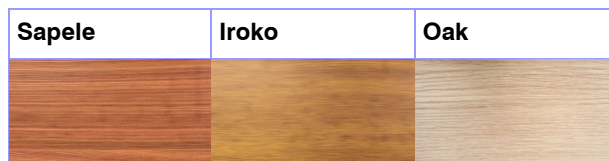
Townscape's policy is one of continuous development, and we reserve the right to modify design specification or price without notice. The copyright, design rights and other intellectual property rights in the products and drawings shown and in the text displayed are the property of Townscape Products Limited.

All sizes and weights are nominal and the Company reserves the right to modify dimensions without notice. If dimensions or weights are critical please state when ordering.

## Product ID VED Seating Options

\*Stadium and Offset blocks cannot have seating longer than 1490 recessed or not

\*\*Due to VED/0044125 being a square profile, only 2 side cladding variations are possible (VED/0044125DS or VED/0044125BS).

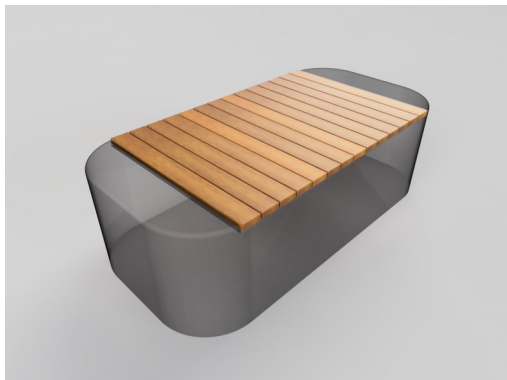


**If you would like samples of the different timber options please contact the sales team**

**Note that oily hardwood timbers are susceptible to tannin bleed under the right atmospheric conditions. Contact the sales office for more information.**

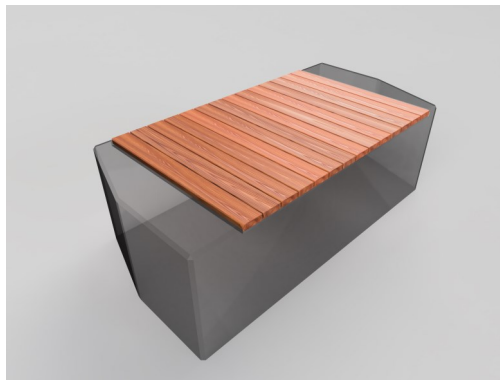
### VED/0046DIK/ R1490\*

1490x990x40  
Standard Deck  
Seat Top,  
Iroko Timber,  
Recessed into  
Block.



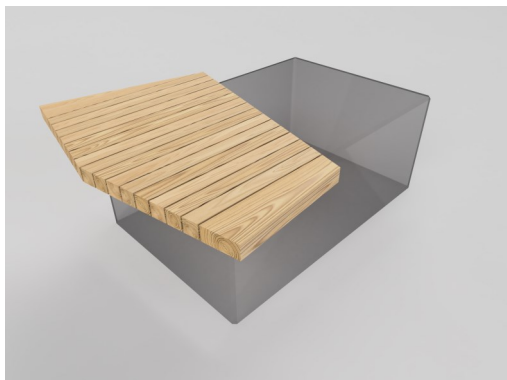
### VED/0047D/ R1490\*

1990x990x40  
Standard  
Deck Seat Top,  
Sapele Timber,  
Recessed into  
Block.



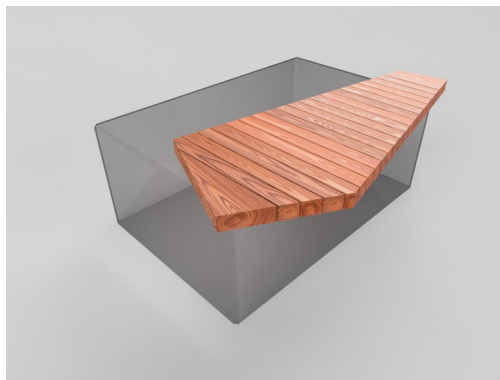
### VED/0044BAN 10

Banyan Seat 1,  
Oak Timber,  
For dimensions  
contact the  
sales team.



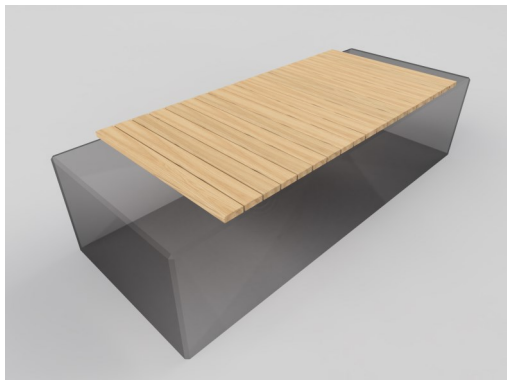
### VED/0044BAN2

Banyan Seat 2,  
Sapele Timber,  
For dimensions  
contact the  
sales team.



### VED/0044250 DO/P2000

2000x990x40  
2000mm Partial  
Deck Seat Top,  
Sapele Timber.



### VED/0044125 DS\*\*

1250x1250x640  
Standard Deck  
Top and Side  
Seat Top,  
Sapele Timber.



#### Policy

Townscape's policy is one of continuous development, and we reserve the right to modify design specification or price without notice. The copyright, design rights and other intellectual property rights in the products and drawings shown and in the text displayed are the property of Townscape Products Limited.

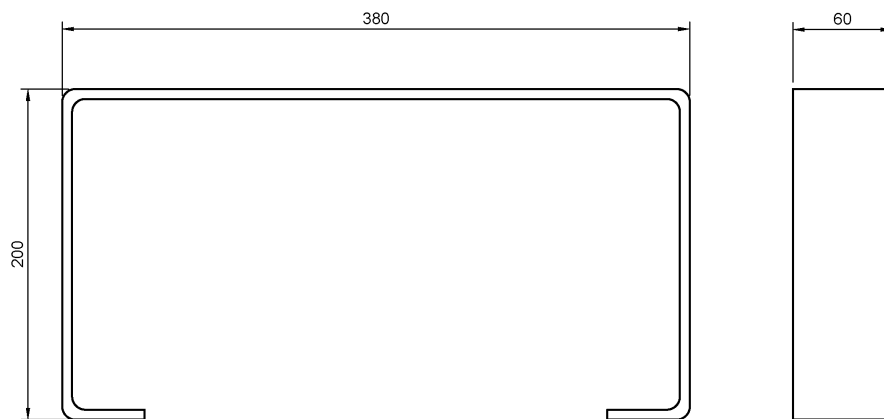
All sizes and weights are nominal and the Company reserves the right to modify dimensions without notice. If dimensions or weights are critical please state when ordering.

## Product ID VED Seating Options

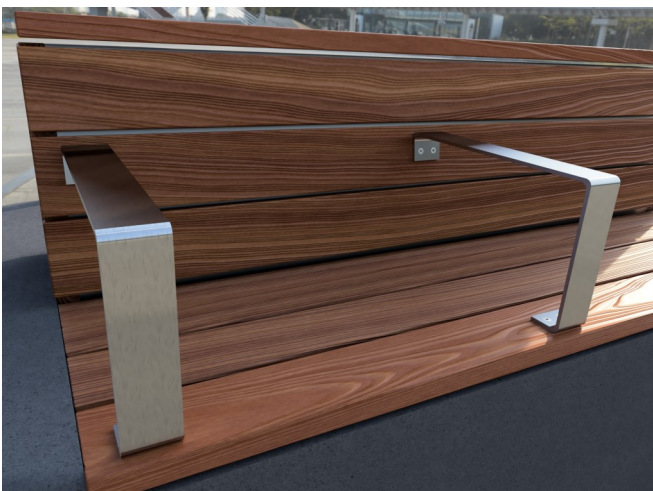
Townscape have Armrests for Seats with or without Backrests. See below the detail of our standard armrests. Bespoke Armrest sizes can be specified talk to the sales team for more information.



**Stainless Steel Armrest for Blocks with Backrest**



**Stainless Steel Armrest for Blocks without a Backrest**



### Policy

Townscape's policy is one of continuous development, and we reserve the right to modify design specification or price without notice. The copyright, design rights and other intellectual property rights in the products and drawings shown and in the text displayed are the property of Townscape Products Limited.

All sizes and weights are nominal and the Company reserves the right to modify dimensions without notice. If dimensions or weights are critical please state when ordering.



# SPECIFICATION SHEET

Bollards  
Street Furniture  
Bespoke Products  
Hostile Vehicle Mitigation

## Maintenance and Product Care

### Timber Maintenance

Where wood has been used for the products purchased there are specific things that need to be taken into consideration re its use and performance. The main points to note are that the assemblies will need some basic maintenance to get the maximum life from it to preserve its appearance and performance. A visual check should be completed at least every 3 months or more frequent whereby any splinters or sharp edges of wood are lightly sanded to remove them. This will ensure that any user of the product does not get injured. Where timber has been supplied the wood should be coated with Danish oil or a suitable substitute to preserve its appearance and longevity. These are as below, which is dependent on wood supplied. If the wood starts to deteriorate and its aesthetic value cannot be maintained, then it should be changed for a like for like replacement. Where replacement is made, then there will be shading difference against any wood that remains. This is due to the weathering effect of wood in service.

### Tannins in Hardwood timber

Tannins are present in all hardwood timber and are a natural part of the timber itself. It is stored within the internal Grains of the wood which, when water or moisture permeates through the timber, can sometimes bring these tannins to the surface causing black or brownish staining to nearby surfaces.

### Discolouration

Given that majority of the products Townscape supply with timber will be situated outside it is to be expected that a natural environment will have an effect on its colour. Heat/cold, Sunlight, Moisture and any other condition which the timber might come in contact with will likely lead to a noticeable physical change to its colour. As previously mentioned in this document a coating of Danish oil or a suitable substitute should ideally be applied every 6 months to help preserve any timbers appearance.

### Natural colour variation

As mentioned before timber is an organic material meaning that variance in colour and grain is natural and should be expected.

### Knots

Knots can be formed on the surface of timber creating dark blemishes which can become more prominent when stained. Relative to other timbers Sapele doesn't commonly knot.

### Grain

Sapele is a hardwood that can form a variety of different grain patterns which is a contributing factor to the natural variation of colour. Pommel, quilted, mottled, wavy, beeswing and fiddleback are all grain patterns which could form.

### Shakes

Shakes are cracks which form along the ring of a timber. They can be formed by the exposure to natural environments or parts of the timber shrinking at different rates amongst other things. They are more commonly noticeable at the end of the timber slat.

### Splits

Splits in timber occur during the drying phase of production due to uneven shrinkage between the centre and outer sections of the timber slat. There is no concern about the structural integrity of the wood so long as the split does not go through the entire length of the slat.

### Sap

Sap is a natural exudate from all trees. Sap can be left trapped in the timber after the manufacturing process. When the temperature rises sap can ooze out of the surface. Applying Danish oil will keep the surface sealed and reduce likelihood of sap seeping out.

### Policy

Townscape's policy is one of continuous development, and we reserve the right to modify design specification or price without notice. The copyright, design rights and other intellectual property rights in the products and drawings shown and in the text displayed are the property of Townscape Products Limited.

All sizes and weights are nominal and the Company reserves the right to modify dimensions without notice. If dimensions or weights are critical please state when ordering.

**Townscape Products Ltd, Fulwood Road South, Sutton-in-Ashfield. Nottinghamshire NG17 2JZ**

**Telephone** +44 (0) 1623 513355 **Email** [sales@townscape-products.co.uk](mailto:sales@townscape-products.co.uk)

© 2025 Townscape Products Ltd E&O.E.