

## Product ID **PLT/O186**

## **BLOCK PLANTER**

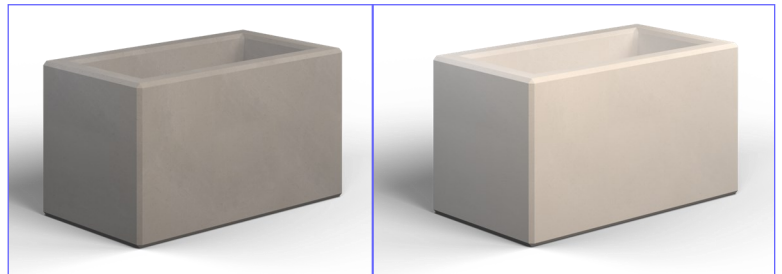
### Description

Townscape Concrete Block Planter 1000 x 1800 x 1000mm . Precast concrete Artisan finish in both Premier smooth and Exposed finishes. 15mm chamfer to edges. The planter has a 50mm through drainage to mitigate over filling. The Planter has lifting points within the internal base of the planter to aid installation. Please sure drainage consideration at the base of the planter. Capacity 735 Litres.



Contact the sales office for more specialist information about this product.

<b>Range</b>	Concrete Planter
<b>Installation</b>	Surface Mounted or Recessed
<b>Materials</b>	Artisan Precast Concrete
<b>Dimensions W x D x H</b>	1000 x 1800 x 1000mm (H)
<b>Height above Ground</b>	900-1000mm
<b>Unit Weight</b>	2660Kg



Finishes	Premier Range	Finishes	Exposed Range
	Grey		Cloburn Red
	Dark Grey		Cleehill Dark Grey
	White		Silver Aberdeen
	Buff		Silver Grey Cornish
	Light Sandstone	Optional <i>Bespoke Finishes</i>	
	Dark Sandstone		

Optional *Bespoke Finishes*

**Please contact the Sales Office for Sample finishes**



OPTIONS	Process
Mild Steel	Cladding
Patterned Mild steel	Cladding
Corten	Cladding
Timber	Cladding
Timber	Seating
Sealant	Coating
Anti Graffiti	Coating

### Policy

Townscape's policy is one of continuous development, and we reserve the right to modify design specification or price without notice. The copyright, design rights and other intellectual property rights in the products and drawings shown and in the text displayed are the property of Townscape Products Limited.

All sizes and weights are nominal and the Company reserves the right to modify dimensions without notice. If dimensions or weights are critical please state when ordering.