

## Product ID **PLT/0230**

### Description

Townscape fully bespoke planter system is a modular system made of a choice of powder coated mild steel or corten steel. Straight corners or curved corners are available. Using the standard sizes or bespoke sizes virtually any space can be filled with a planter.

Any questions regarding this Planter system please contact the sales team.

### Installation

Surface should be flat . Lift planter into position. Place into the base of the liner Terram 1000 or equivalent filter membrane. Add 150mm of pea shingle to the bottom of the planter. Add additional water reservoir if needed. Plant using the specified medium and plant from the horticultural specialist.

For information regarding the installation of the retaining walls

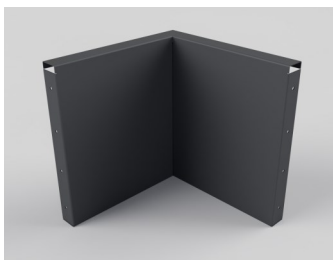
<b>Range</b>	Linear Retaining Walls Planter System
<b>Installation</b>	Bolt Down
<b>Materials</b>	MATT Powder Coated Mild Steel/Corten Steel 3mm gauge.

SKU	Dimensions W x D x H	Unit Weight	Description
PLT/0230-1	1000x50x600	21kg	PC Mild steel Straight Wall
PLT/0230-2	1500x50x600	30kg	PC Mild Steel Straight Wall
PLT/0230-3	2000x50x600	37kg	PC Mild Steel Straight Wall
PLT/0230-4	500x500x600	25kg	PC Mild Steel Inside Corner
PLT/0230-5	1000x1000x600	42kg	PC Mild Steel Outside Corner
PLT/0230-6	2000x2000x600	71kg	PC Mild Steel Inside Curve
PLT/0230-7	1000x1000x600	36kg	PC Mild Steel Outside Curve
PLT/0230-8	1500x1500x600	54kg	PC Mild Steel Outside Curve
PLT/0230-_C	-	-	Corten Steel

### Bespoke Sizes can also be specified



**PLT/0230-4C**  
 500x500x600  
 Inside Corner  
 Corten Steel



**PLT/0230-4**  
 500x500x600  
 Inside Corner  
 Mild Steel  
 RAL7021



#### Policy

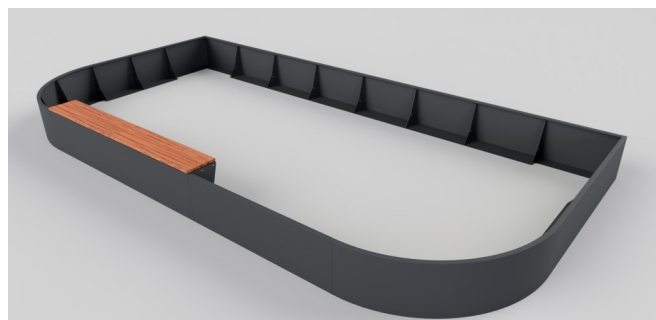
Townscape's policy is one of continuous development, and we reserve the right to modify design specification or price without notice. The copyright, design rights and other intellectual property rights in the products and drawings shown and in the text displayed are the property of Townscape Products Limited.

All sizes and weights are nominal and the Company reserves the right to modify dimensions without notice. If dimensions or weights are critical please state when ordering.

## Linear Retaining Walls Planter System



PLT/0230 Linear Retaining Walls Corten

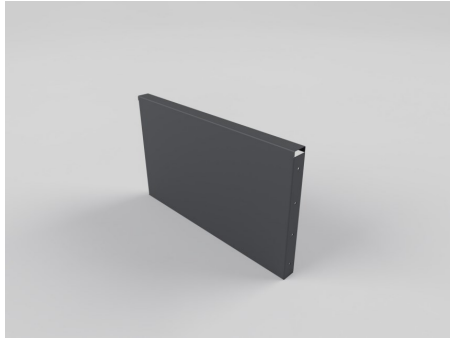


PLT/0230 Linear Retaining Walls PC Mild Steel RAL 7021

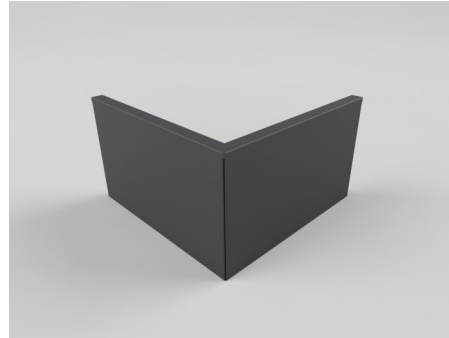
## Product ID **PLT/0230**

## Linear Retaining Walls Planter System

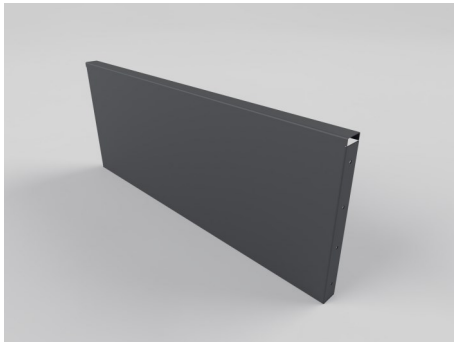
**PLT/0230-1**  
 1000x70x600  
 Straight Wall  
 Mild Steel  
 RAL7021



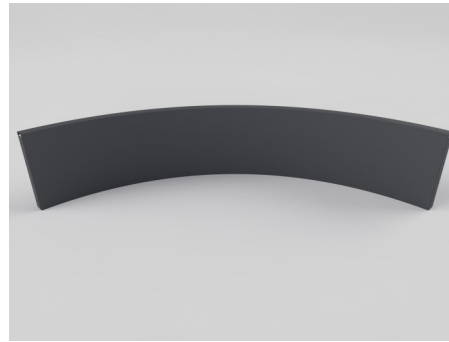
**PLT/0230-5**  
 1000x1000x600  
 Outside Corner  
 Mild Steel  
 RAL7021



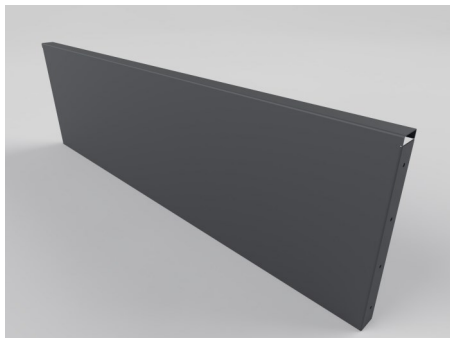
**PLT/0230-2**  
 1500x70x600  
 Straight Wall  
 Mild Steel  
 RAL7021



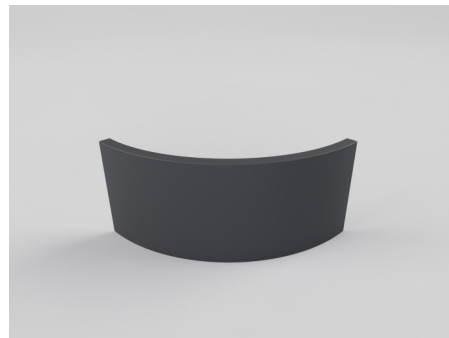
**PLT/0230-6**  
 2000x2000x600  
 Inside Curve  
 Mild Steel  
 RAL7021



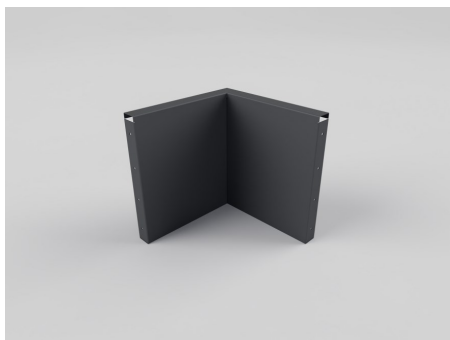
**PLT/0230-3**  
 2000x70x600  
 Straight Wall  
 Mild Steel  
 RAL7021



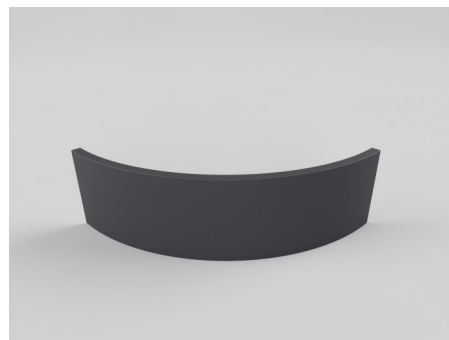
**PLT/0230-7**  
 1000x1000x600  
 Outside Curve  
 Mild Steel  
 RAL7021



**PLT/0230-4**  
 500x500x600  
 Inside Corner  
 Mild Steel  
 RAL7021



**PLT/0230-8**  
 1500x1500x600  
 Outside Curve  
 Mild Steel  
 RAL7021



### Policy

Townscape's policy is one of continuous development, and we reserve the right to modify design specification or price without notice. The copyright, design rights and other intellectual property rights in the products and drawings shown and in the text displayed are the property of Townscape Products Limited.

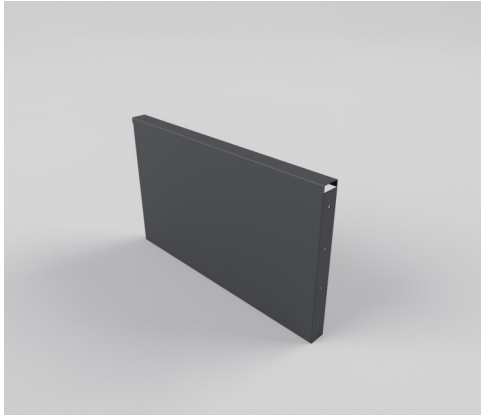
All sizes and weights are nominal and the Company reserves the right to modify dimensions without notice. If dimensions or weights are critical please state when ordering.

## Product ID **PLT/0230**

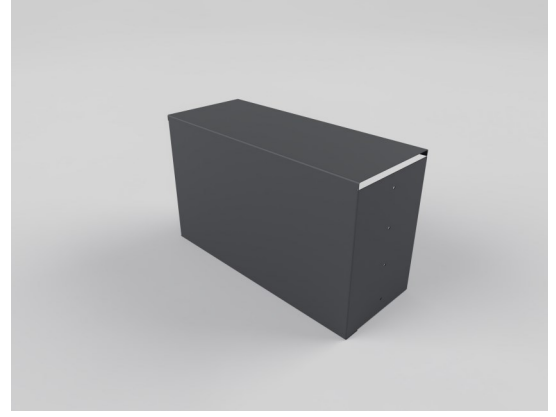
Retaining walls also have the option of having a wide top.

## Linear Retaining Walls Planter System

**PLT/0230-1**  
1000x70x600  
Straight Wall  
Mild Steel  
RAL7021



**PLT/0230-1W**  
1000x400x600  
Straight Wall  
Mild Steel  
RAL7021



SKU	Dimensions W x D x H	Unit Weight	Description
PLT/0230-1W	1000x400x600	21kg	PC Mild steel Straight Wall
PLT/0230-2W	1500x400x600	30kg	PC Mild Steel Straight Wall
PLT/0230-3W	2000x400x600	37kg	PC Mild Steel Straight Wall
PLT/0230-4W	500x500x600	25kg	PC Mild Steel Inside Corner
PLT/0230-5W	1000x1000x600	42kg	PC Mild Steel Outside Corner
PLT/0230-6W	2000x2000x600	71kg	PC Mild Steel Inside Curve
PLT/0230-7W	1000x1000x600	36kg	PC Mild Steel Outside Curve
PLT/0230-8W	1500x1500x600	54kg	PC Mild Steel Outside Curve
PLT/0230-_WC			Corten Steel

**Bespoke Sizes  
can also be  
specified**



### Policy

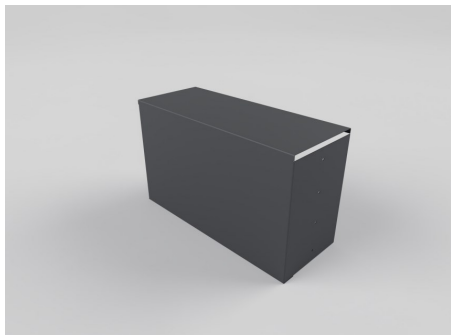
Townscape's policy is one of continuous development, and we reserve the right to modify design specification or price without notice. The copyright, design rights and other intellectual property rights in the products and drawings shown and in the text displayed are the property of Townscape Products Limited.

All sizes and weights are nominal and the Company reserves the right to modify dimensions without notice. If dimensions or weights are critical please state when ordering.

## Product ID **PLT/0230**

## Linear Retaining Walls Planter System

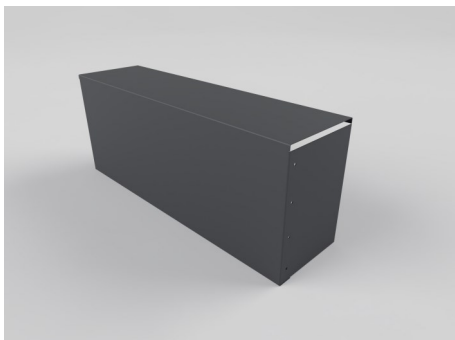
**PLT/0230-1W**  
 1000x400x600  
 Straight Wall  
 Mild Steel  
 RAL7021



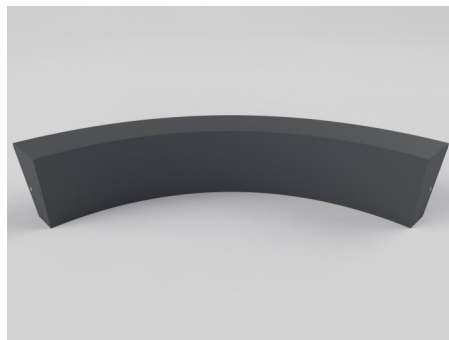
**PLT/0230-5W**  
 1000x1000x600  
 Outside Corner  
 Mild Steel  
 RAL7021



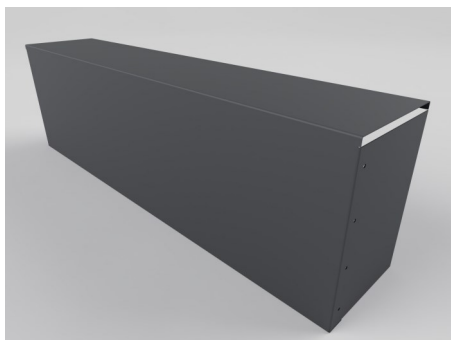
**PLT/0230-2W**  
 1500x400x600  
 Straight Wall  
 Mild Steel  
 RAL7021



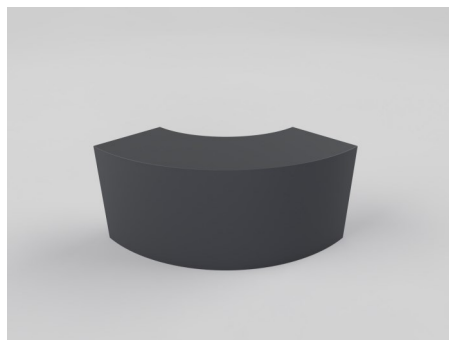
**PLT/0230-6W**  
 2000x2000x600  
 Inside Curve  
 Mild Steel  
 RAL7021



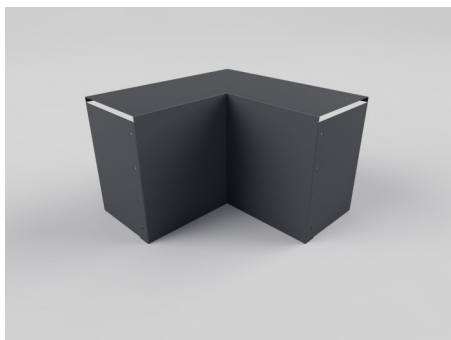
**PLT/0230-3W**  
 2000x400x600  
 Straight Wall  
 Mild Steel  
 RAL7021



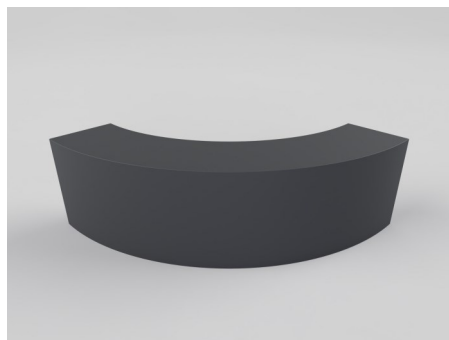
**PLT/0230-7W**  
 1000x1000x600  
 Outside Curve  
 Mild Steel  
 RAL7021



**PLT/0230-4W**  
 500x500x600  
 Inside Corner  
 Mild Steel  
 RAL7021



**PLT/0230-8W**  
 1500x1500x600  
 Outside Curve  
 Mild Steel  
 RAL7021



### Policy

Townscape's policy is one of continuous development, and we reserve the right to modify design specification or price without notice. The copyright, design rights and other intellectual property rights in the products and drawings shown and in the text displayed are the property of Townscape Products Limited.

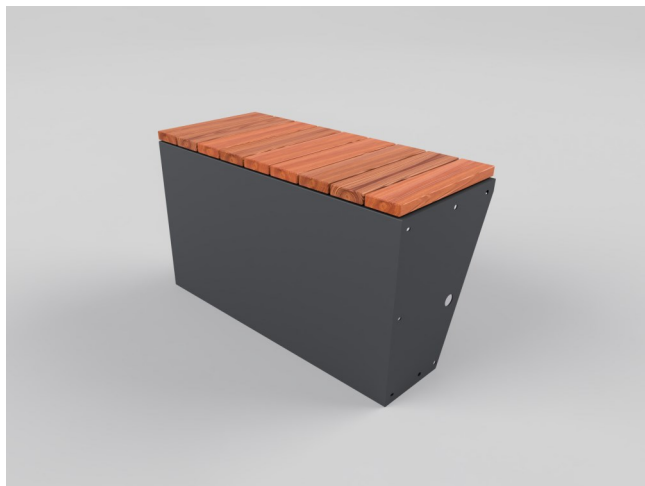
All sizes and weights are nominal and the Company reserves the right to modify dimensions without notice. If dimensions or weights are critical please state when ordering.



## Product ID **PLT/0230**

Retaining walls with a wide top can also have a timber seat top. 2 styles available (Deck and Bishop)

## Linear Retaining Walls Planter System



**PLT/0230-1WD**  
1000x400x640  
Straight Wall  
RAL7021  
Deck Timber Top



**PLT/0230-8WB**  
1500x400x640  
Straight Wall  
RAL7021  
Bishop Timber Top

SKU	Description	Sapele	Iroko
PLT/0230-_WD	Deck Timber Top		
PLT/0230-_WB	Bishop Timber Top		



Bespoke retaining walls can be specified contact the **Sales Office** for more detail. Expect longer lead times on bespoke products.

### Policy

Townscape's policy is one of continuous development, and we reserve the right to modify design specification or price without notice. The copyright, design rights and other intellectual property rights in the products and drawings shown and in the text displayed are the property of Townscape Products Limited.

All sizes and weights are nominal and the Company reserves the right to modify dimensions without notice. If dimensions or weights are critical please state when ordering.

