

## Product ID VED/0187STD

### Description

**Victoria CT50** Hostile Vehicle Mitigation Mild Steel Planter, Standard Mount. A robust Steel construction, supplied with an integrated galvanised mild steel liner. The planter is fitted with 2no. CT50 N3/02 Counter Terror Bollards (Product ID: VED/ 0015) supplied. Galvanised mild steel planter and provision for a water reservoir and over-flow drainage. The Townscape Counter Terror Bollards are PAS68:2010 tested to the following classification:

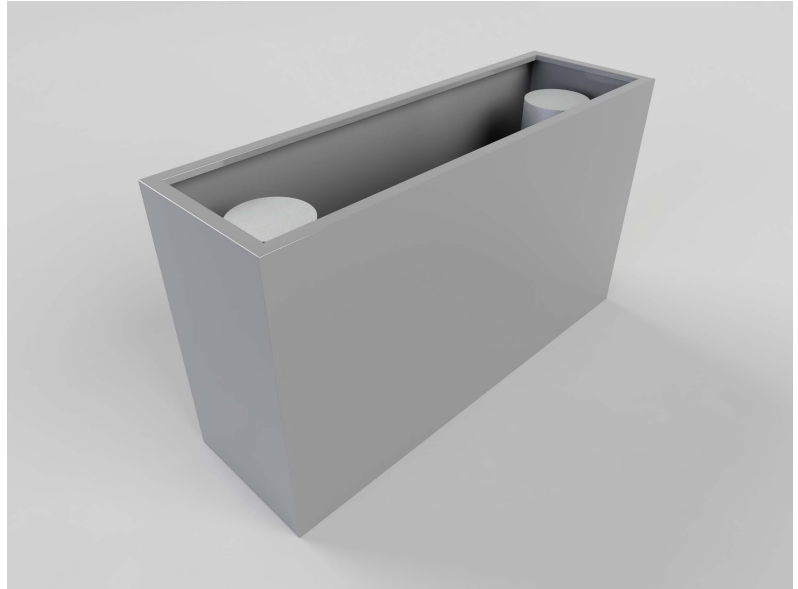
**50mph Test: V/7500/[N3]/80/90:10.6/11.1.**

Powder Coated Finish in Satin Finish to RAL Colour. Other finishes can also be specified. A specialist RC foundation is required for this product.

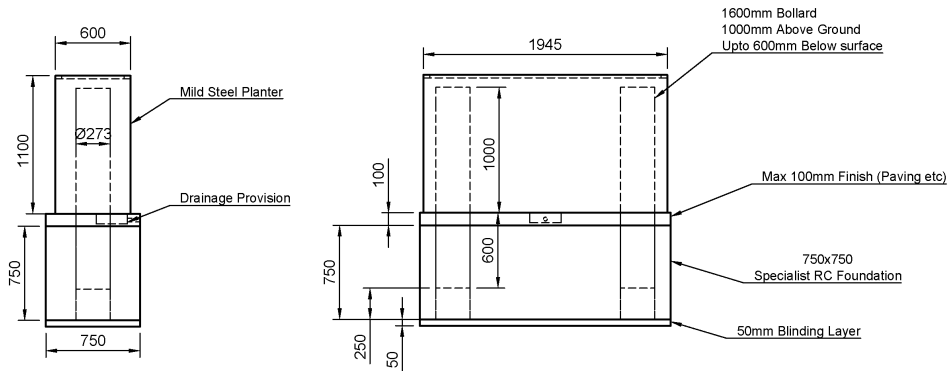
### Installation

Fit PAS 68 elements to specialist instructions . Lift planter into position. Bolt planter to surface. Once positioning is correct lower liner over the PAS 68 elements into the planter. If required ensure below surface drainage immediately adjacent to PAS 68 elements. Fit filter membrane to planter liner. Add 150mm of pea shingle to the bottom of the liner. Add 150mm of pea shingle to the bottom of the liner. Add additional water reservoir if needed. Plant the liner using the specified medium and plants from the horticultural specialist  
Ensure proper drainage underneath any surface mounted planters, e.g holes through the surface material deep enough to reach a permeable material layer to allow water to percolate away.

## CT VICTORIA MILD STEEL PLANTER



VICTORIA PAS 68 PLANTER VED 00187STD - Foundation Footprint 3946 mm x (L) x 600 (W) x 600mm (D)



Please contact the Sales Office for Sample finishes

|                             |  |
|-----------------------------|--|
| <b>Range</b>                | CT Mild Steel Planters                         |
| <b>Installation</b>         | PAS 68 depth 750mm                             |
| <b>Materials</b>            | Mild Steel Galvanised and Powder Coated Finish |
| <b>Dimensions W x D x H</b> | 1945 x 600 x 1100mm                            |
| <b>Height above Ground</b>  | 1100mm   |
| <b>Unit Weight</b>          | 450kg (All Elements)                           |
| <b>Planter Capacity</b>     | 650 litres                                     |



| Finishes   | Premier Range  |
|--|--|
|  | Mild Steel—Powder Coated Finish  |
|  | CUT OUT PATTERN—Please refer to the sales office for more options and information. |

### Policy

Townscape's policy is one of continuous development, and we reserve the right to modify design specification or price without notice. The copyright, design rights and other intellectual property rights in the products and drawings shown and in the text displayed are the property of Townscape Products Limited.

All sizes and weights are nominal and the Company reserves the right to modify dimensions without notice. If dimensions or weights are critical please state when ordering.