

Product ID VED/O187S

CT VICTORIA PLANTER

Description

Victoria 50 Hostile vehicle Mitigation Stainless Steel Planter. A robust stainless steel construction, supplied with an integrated galvanised mild steel liner. The planter is fitted with 2no. CT50 N2/A Counter Terror Bollards (Product ID: VED/0015SM) (Supplied). The Townscape Counter Terror Bollards are IWA 14 tested to the following classification:

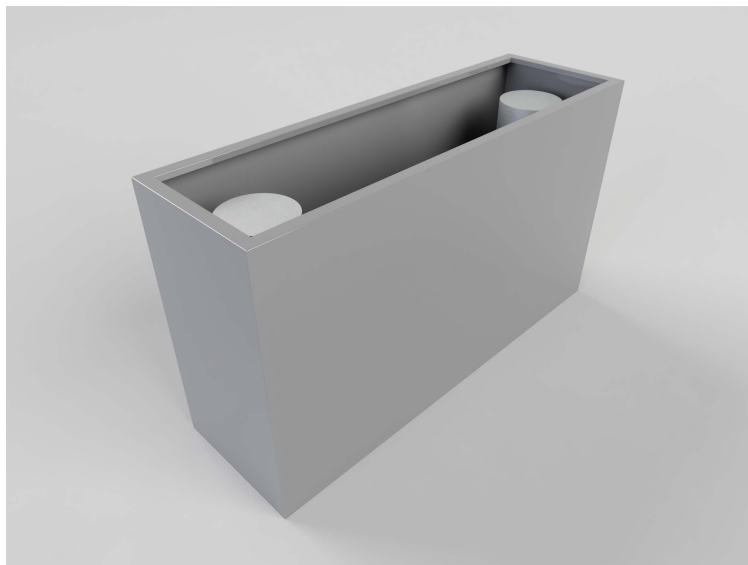
50mph Test: V/7200/80/90:8.7

Available in a Range of RAL Powder Coated Colours. Bespoke sizing is available.

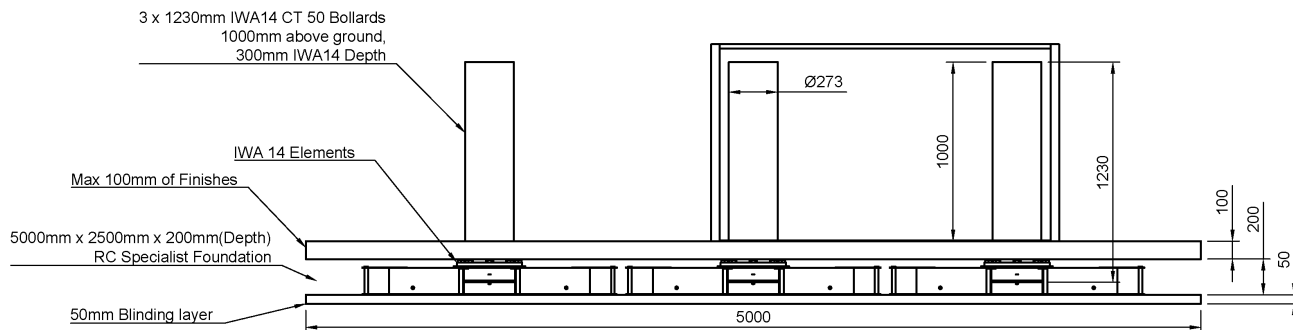
Installation

Fit PAS 68 elements to specialist instructions . Lift planter into position. Bolt planter to surface. Once positioning is correct lower liner over the PAS 68 elements into the planter. If required ensure below surface drainage immediately adjacent to PAS 68 Elements. Fit filter membrane to planter liner. Add 150mm of pea shingle to the bottom of the liner. Add additional water reservoir if needed. Plant the liner using the specified medium and plants from the horticultural specialist.

Ensure proper drainage underneath any surface mounted planters, e.g holes through the surface material deep enough to reach a permeable material layer to allow water to percolate away.



VICTORIA PAS 68 PLANTER VED 0187S - FOUNDATION FOOTPRINT FOOTPRINT
5000 mm (L) x 2500 mm (W) x 300 mm (D)



Please contact the Sales Office for Sample finishes

| | |
|----------------------|--|
| Range | CT Stainless Steel Planter |
| Installation | IWA 14 depth 300mm |
| Materials | Premium Grade 316 stainless steel Powder Coated |
| Dimensions W x D x H | 1945 x 600 x 1100mm |
| Height above Ground | 1100mm |
| Unit Weight | 450kg |
| Planter Capacity | 800 litres |



| Finishes | Premier Range |
|--|---|
|  | Stainless Steel—Powder Coat- ed Finish |

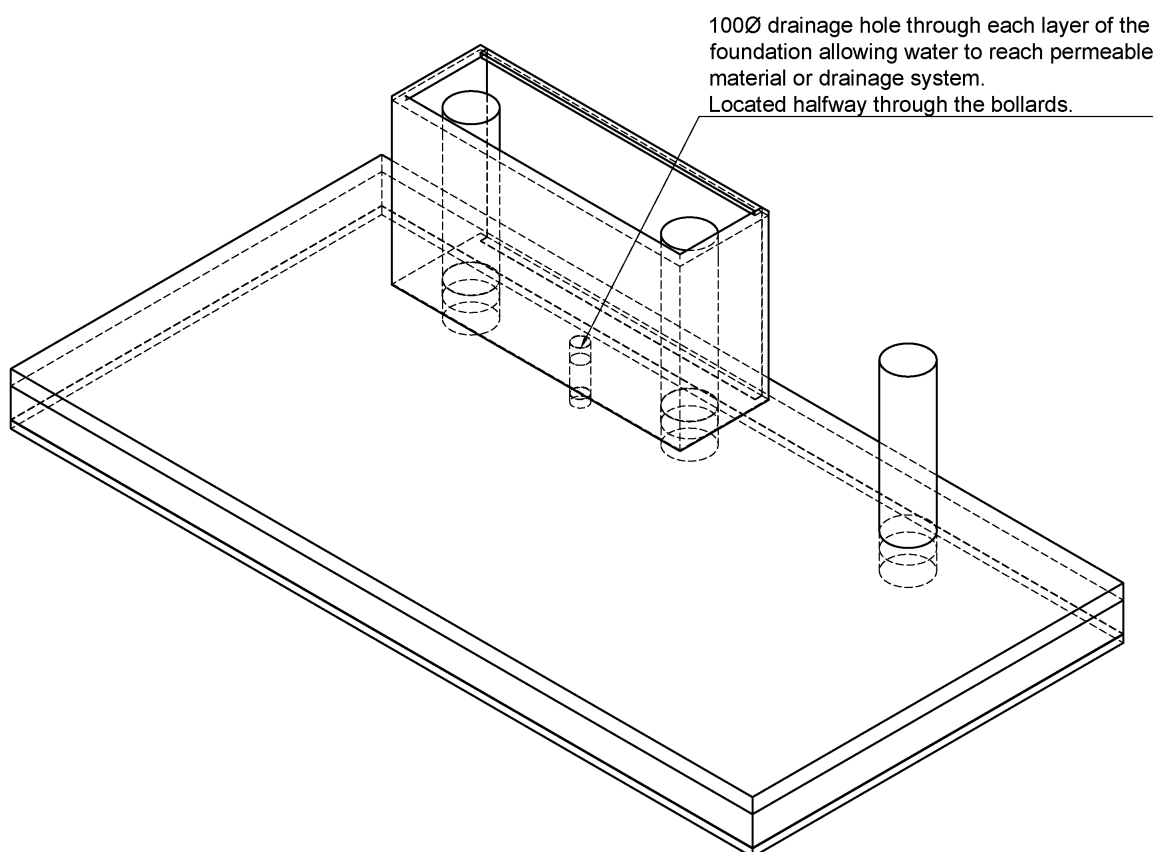
Policy

Townscape's policy is one of continuous development, and we reserve the right to modify design specification or price without notice. The copyright, design rights and other intellectual property rights in the products and drawings shown and in the text displayed are the property of Townscape Products Limited.

All sizes and weights are nominal and the Company reserves the right to modify dimensions without notice. If dimensions or weights are critical please state when ordering.

CT VICTORIA PLANTER

VICTORIA PAS 68 PLANTER VED 00 - FOUNDATION FOOTPRINT FOOTPRINT 5000 mm (L) x 2500 mm (W) x 300 mm (D)



Please contact the Sales Office for Sample finishes

| | |
|----------------------|---|
| Range | CT Stainless Steel Planter |
| Installation | IWA 14 depth 300mm |
| Materials | Premium Grade 316 stainless steel Powder Coated |
| Dimensions W x D x H | 1945 x 600 x 1100mm |
| Height above Ground | 1100mm |
| Unit Weight | 250kg |
| Planter Capacity | 800 litres |



| Finishes | Premier Range |
|--|--------------------------------------|
|  | Stainless Steel—Powder Coated Finish |

Policy

Townscape's policy is one of continuous development, and we reserve the right to modify design specification or price without notice. The copyright, design rights and other intellectual property rights in the products and drawings shown and in the text displayed are the property of Townscape Products Limited.

All sizes and weights are nominal and the Company reserves the right to modify dimensions without notice. If dimensions or weights are critical please state when ordering.